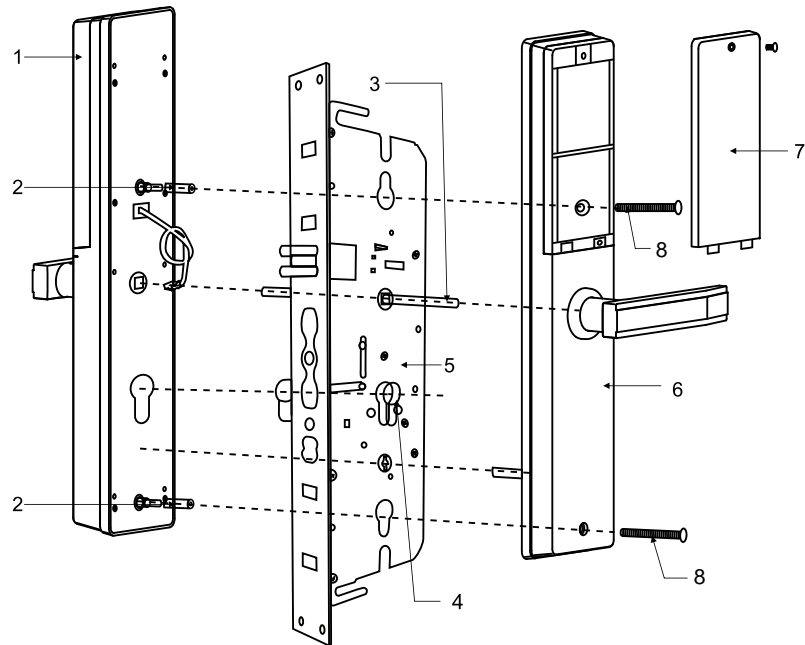
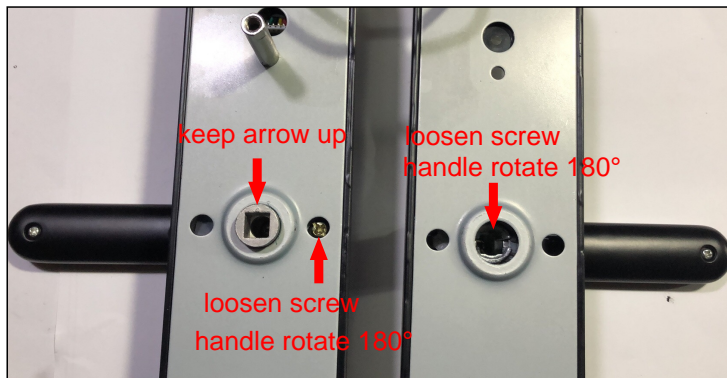


## Installation Instruction



- |                 |                 |                 |
|-----------------|-----------------|-----------------|
| 1.Front Panel   | 4.Lock Cylinder | 7.Battery Cover |
| 2.Joint Pipe    | 5.Lock Body     | 8.Joint Screw   |
| 3.Quadrate Core | 6.Back Panel    |                 |

## Lock change direction



Front Panel

Back Panel

## Function and Operation

### 1.Setting button function:

- ◇ Long click setting button: reset the system(button inside the battery cover)
- ◇ Slow click setting button 2 times to change language(English&Chinese)

### 2.Reset

- ◇ Long click the setting button 5 seconds until hear "Ding Dang" then press "#" to confirm. It will clear all the data.
- ◇ After reset, any password(6-12 length), any IC card could open the door.

### 3.Add user

- ◇ The system could max add 200 user, the first three is administrator, then general user.
- ◇ Fingerprint, password, IC card could be setted as administrator and general user.
- ◇ After reset, perss \* and #, it will ask you to register administrator, input fingerprint, password or card, after add 3 administrator, then add general user.
- ◇ Not reset status, press \* and #, it will ask you verify administrator, after verified it will prompt 1.add user 2.delete user 3.app settings 4. restore to default. Later press 1 and input fingerprint, password or IC card.

### 4.Delete user

- ◇ Press \* and # and verify administrator, it will prompt 1.add user 2.delete user 3.app setting 4. restore to default. Press 2 and input the fingerprint, password+#, card which want to be delete.

### 5.App settings

- ◇ This function already remove in lock and added in the app.

## Technical Parameters

Fingerprint Capacity: 100 pcs  
Password Capacity: 10 group  
Card Capacity: 200 pcs  
Password Length: 6-12  
Phantom Password Length: 36  
Power: 4.5V-10V  
Quiescent Current:<0.04mA  
Dynamic Current:<250mA  
Working Temperature: -20-60°  
Working Humidity: 15%-95%

## 6.Other function

- ✧ Continue to input wrong info 5 times, it will lock for 3 minutes and will not respond for 3 minutes.
- ✧ Password protect from spy: for example password 123456, you could input 968581234562875, you could add not related number in the front and in the back of password, then press # to open the lock, max each 12 number in front and in the back.
- ✧ When power lower than 4.8V, the system will prompt power is low, pls change battery.
- ✧ If power lower than 4.5V, it will stop work and you must change battery.

## App User Manual



### 1.Download App

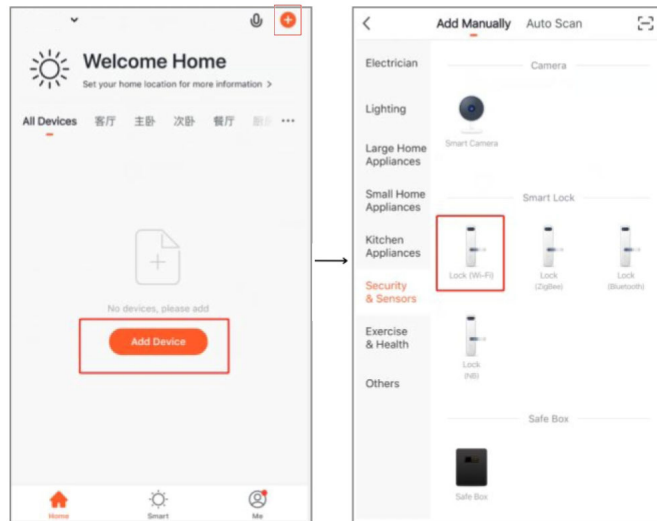
- ✧ Scan the QR code to download smartlife app, or you can also search keyword smartlife at app store or google play to download.

### 2.Register and Add

- ✧ Register and login. Click setting button and digit "5" will flash. Later click the top right "+", choose wifi lock



Click setting button to add



### 3.Unlock by app

- ✧ Click # in lock, app will prompt to ask unlock, click unlock button in app.
- ✧ Click remote dynamic password in app, input the password in the lock, you will open the lock.
- ✧ Click Temporry PW in app to add temporary password.

